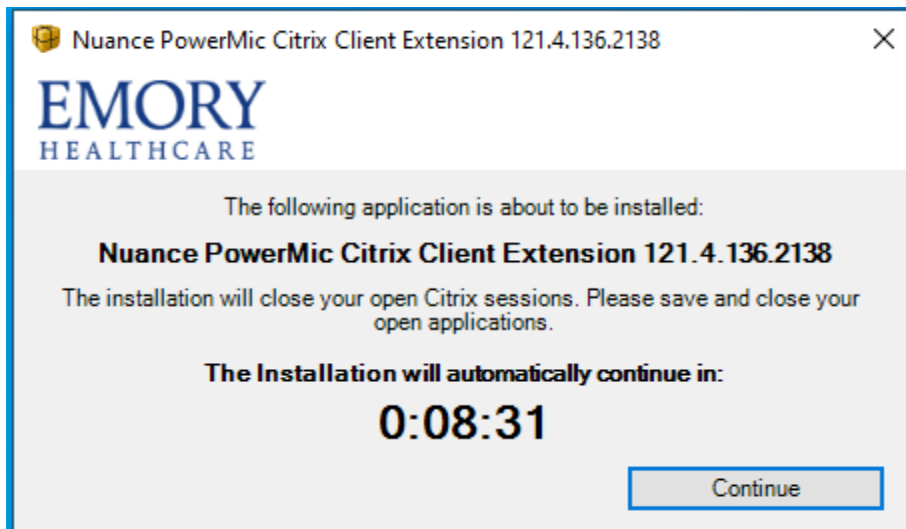


Installation Instructions for Nuance Citrix Extensions for use with DMO

Before you can use a USB-connected Nuance PowerMic on a Windows computer with the Dragon Medical One (DMO) dictation software in Epic

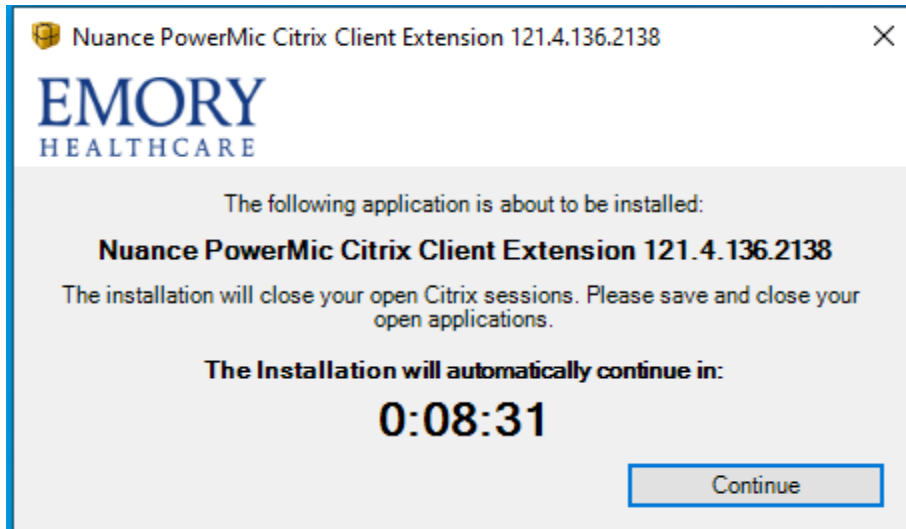
- You must install the Citrix client on your local Windows-based computer because Epic is accessed from the Emory Healthcare Virtual Desktop environment. Instructions for installing Citrix: <https://www.emoryhealthcare.org/i-am/vdt-vdi.html>
- You must install a small program on your local computer that will connect the Nuance PowerMic to the Citrix client following the instructions below.

- 1) From your local computer's Chrome browser, go to <https://www.emoryhealthcare.org/i-am/dmo.html>
- 2) Click the link "Download and Install the Nuance PowerMic Citrix Extension"
- 3) The Nuance PowerMic Citrix Client Extension installation software will download. Look for the download at the bottom of your browser window. Click to open the file to start the installation.
- 4) You will see the window below.
Note: Windows may first display a prompt for you to confirm that you want to run this program.

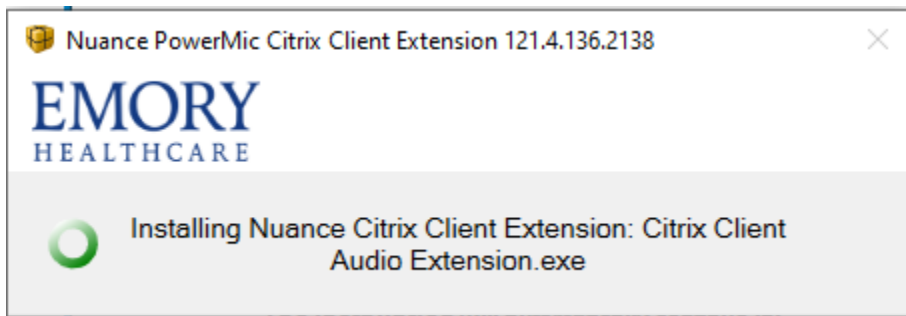


5) Click Continue to proceed with the installation.

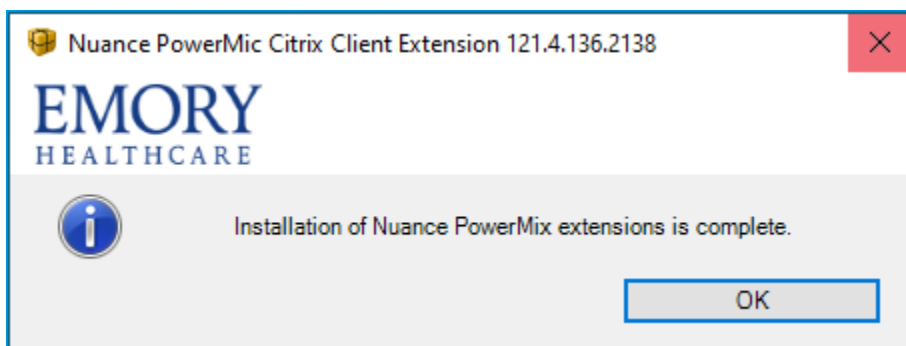
Note: Installation will proceed automatically after 10 minutes even if you do not click Continue.



6) You will see the window below showing the progress of the installation.



7) When installation is complete you will see this window. Click OK.



Note: You do not need to reboot your computer after installation is complete.